

DOUBLE FLANGE BUTTERFLY VALVE HANDLE / WORM GEAR OPERATED

Lehry Make offers Manul (Gear / Handle) Double Flanged Butterfly Valve, engineered for multiple ON/ OFF operations in the Larger pipe line and full flow down streams.

Size Range : 3" to 48"

Body	ASTM - A 126 Grade B (Gray Iron)
	ASTM - A 216 Grade WCB (Cast Steel)
	ASTM - A 536 Grade 65-45-12 (Ductile Iron)
	ASTM - A 351 Grade CF8 / CF8M / CF3M/ CD4MCuN
Disc	ASTM - A 126 Grade B (Gry Iron) + Powder Coated
	ASTM - A 216 Grade WCB (Cast Steel) + Powder Coated
	ASTM - A 536 Grade 65-45-12 (Ductile Iron) + Powder Coated
	ASTM - A 351 Grade CF8 / CF8M / CF3M/ CD4MCuN
Seat	S.G.Iron with Teflon / Powder / Nylon Coated & Rubber Line
Shaft	EPDM / Nitrile / Hayplon / Viton / Silicon / Neopren
Valve Type	AISI 410/ AISI 304/ AISI 316/ AISI 316L
Body Type	Centric Disc Butterfly Valve with a single piece rubber lined body
Seat Type	Short wafer type Double Flange
End Connection	Integrally moulded with the body (Renewable Seat)
Pressure rating	Wafer Type Double flange Suit for #150 'D' Table 'E' & IS 6392 Table 11 (PN 10 / PN 1.6)
Oper. Temp. range	PN 10 / PN 16 (PN 20 On Request)
Seat Leakage	-20 °C to 80 °C For Nitrile Seat (depending on MOC)
Operation	Tight shut off
	Lever Operated / Gear Operated / Chain Wheel Operated Extended Shaft



Key Feature :

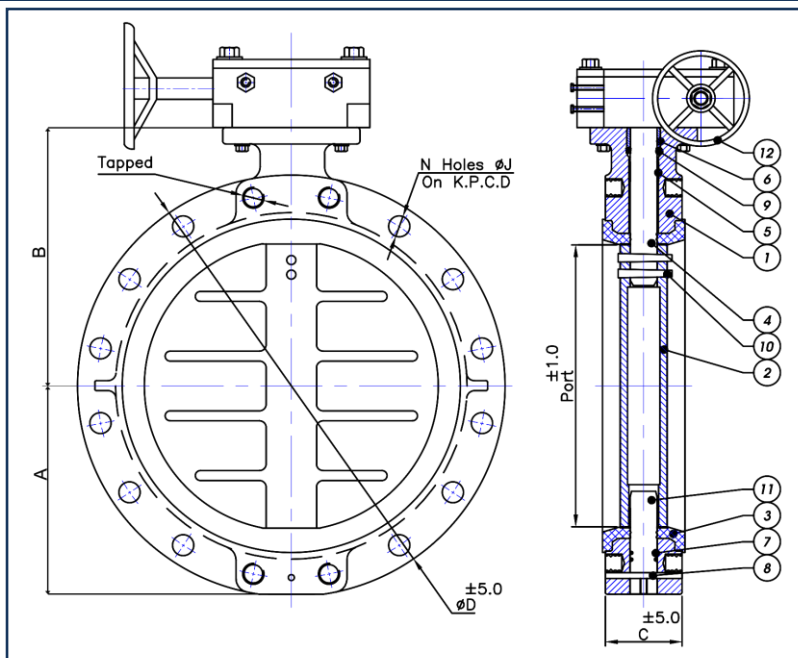
- ❖ integrally moulded seat liner on the body, which ensures excellent dimensional stability & guaranfeed seat tightness.
- ❖ Seat liner extending on to the contact faces ensures perfect sealing and eliminates the need for separate flange gaskets.
- ❖ Narrow land disc ensures perfect sealing with least operating torque requirements.
- ❖ A fully universal body design ensures fitting of the valve between companion flanges of all popular standards (viz :ANSI, BS, DIN,JIS, IS ect.)
- ❖ The notch disc & band lever ensures locking of the valve in 8 intermediate position in addition to close and open position. Hand lever can be looked through pad lock.
- ❖ Body casting made of superior FG 260 grade cast iron to ensure additional strength.
- ❖ Valve disc made of stainless steel / ductile cast iron which enable protection against possible water hammer or pressure surges.
- ❖ A truly line size body bone to ensure maximum flow capacity with the lowest pressure drop.

Standards :

Design and manufacturing	: API 609 category A/IS : 13095 / BS EN 593
Valve face to face dimensions	: Short wafer as per ISO 5752 Tab 5 /API 609 CategoryA / ISO 5752 TAB 1 (BS 5155)
Top flange drilling	: ISO 5211
Inspection and testing	: API 598/ BS EN 12266-1
Flange standard conformity	: ASME B 16.5/ ASME B 16.47 Class 150, BS 10 Tab D, E & F

Pressure	Temperature
PN 10 / PN 20 (PN 20 On Request)	-20 to 80°C for Nitrile Seat Depending on MOC

Note: (Valve F to F will be as per Wafer Type)
 (Flange Thickness Non – STD As per Mfg. Std Wafer Short Double Flanged Body)



BILL OF MATERIAL

No	Description	Material	QTY
1	Body	ASTM - A 126 Grade B (Gray Iron)	1
		ASTM - A 216 Grade WCB (Cast Steel)	
		ASTM - A 536 Grade 65-45-12 (Ductile Iron)	
		ASTM - A 351 Grade CF8 / CF8M / CF3M / CD4MCuN	
2	Disc	ASTM - A 126 Grade B (Gry Iron) + Powder Coated	1
		ASTM - A 216 Grade WCB (Cast Steel) + Powder Coated	
		ASTM - A 536 Grade 65-45-12 (Ductile Iron) + Powder Coated	
		ASTM - A 351 Grade CF8 / CF8M / CF3M / CD4MCuN	
3	Seat	S.G.Iron with Teflon / Powder / Nylon Coated & Rubber Line	1
4	Shaft	EPDM / Nitrile / Hayplon / Viton / Silicon / Neopren	1
5	Bearing Bush	AISI 410/ AISI 304/ AISI 316/ AISI 316L	1
6	Bush	Metal Bush PTFE Coated	2
7	O - Ring	PTFE (Teflon)	1
8	Bottom Plate / Dowel Pin	Nitrile / EPDM / Hayplon / Viton / Silicon / Neopren	1
9	V – Seal	AISI 410/ AISI 304/ AISI 316/ AISI 316L/ M.S	1
10	Taper Pin	Nitrile / EPDM / Hayplon / Viton / Silicon / Neopren	1
11	Bottom Pin	AISI 410/ AISI 304/ AISI 316/ AISI 316L	2
12	Gear Box	AISI 304/ AISI 316/ AISI 316L	1
		Standard	1

Dimensions

(All Dimensions are in mm)

Valve Model	Valve Size		Port	A	B	C	D	N	J	Tapped	PCD
	MM	Inch									
DFW-ECO- 80	80	3"	80	95	129	46	190.00	19.05	4	--	152.4
DFW-ECO- 100	100	4"	100	113	147	52	230.00	19.05	8	--	190.5
DFW-ECO- 150	150	6"	150	136	177	56	280.00	22.20	8	--	241.3
DFW-ECO- 200	200	8"	200	174	214	60	345.00	22.20	8	--	298.5
DFW-ECO- 250	250	10"	241	201	265	68	405.00	25.40	12	--	362
DFW-ECO- 300	300	12"	286	236	303	78	485.00	25.40	12	--	431.8
DFW-ECO- 350	350	14"	333	248	345	78	535.00	28.60	12	--	476.3
DFW-ECO- 400	400	16"	382	300	364	102	595.00	28.60	16	--	539.8
DFW-ECO- 450	450	18"	433	322	381	114	635	31.75	16	1.1/8" UNC	577.9
DFW-ECO- 500	500	20"	476	354	436	127	700.00	31.75	20	1.1/8" UNC	635
DFW-ECO- 600	600	24"	590	405	515	154	815.00	34.90	20	1.1/4" UNC	749.3
DFW-ECO- 650	650	26"	635	435	490	165	870.00	34.90	24	1.1/4" UNC	806.4
DFW-ECO- 700	700	28"	680	462	543	165	925.00	34.90	28	1.1/4" UNC	863.6
DFW-ECO- 750	750	30"	725	482	576	190	985.00	34.90	28	1.1/4" UNC	914.4
DFW-ECO- 800	800	32"	785	533	618	190	1060.00	41.30	28	1.1/2" UNC	977.9
DFW-ECO- 900	900	36"	885	576	675	203	1170.00	41.30	32	1.1/2" UNC	1085.8
DFW-ECO- 1000	1000	40"	965	640	720	216	1290.00	41.30	36	1.1/2" UNC	1200.2
DFW-ECO- 1200	1200	48"	1170	750	865	254	1510	41.30	44	1.1/2" UNC	1422.4

Lehry Instrumentation & Valves Pvt. Ltd.,

"Lehry Chambers" #78 (Old No: 51)Sembudoss Street,
P.B No.1506, Parrys, Chennai - 600 001.

Phone : 044 25226995/25225185/25226187/42163823/
42625620/42625621. Fax : 044 25231715

Email : info@lehry.com / Website : www.lehryvalves.com

Branches : Chennai, Bangalore, Hyderabad, Mumbai, Noida, Pune